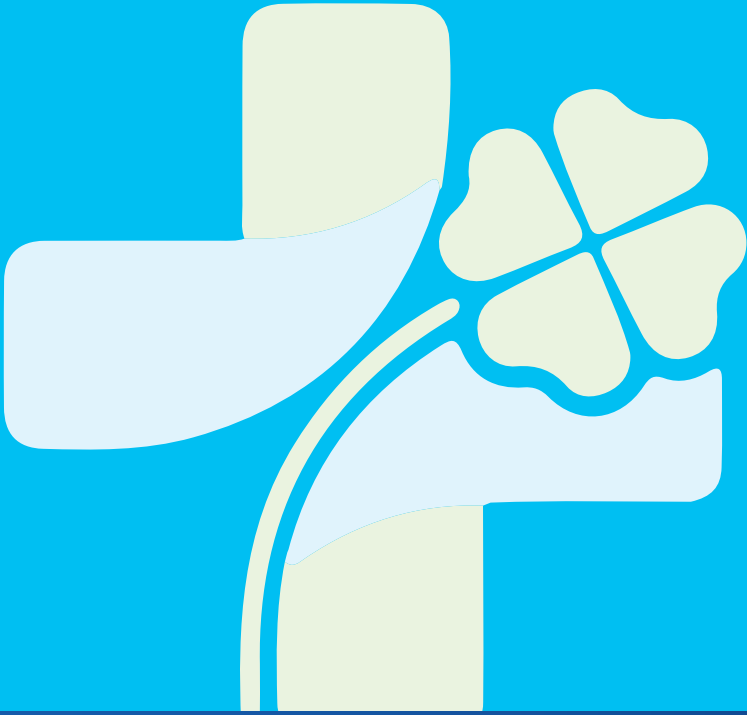




MAT MEDİKAL

www.matmedikal.com.tr



Product Catalog

 İnönü Mah. Kartal Cad. ABS Plaza Ataşehir/İstanbul

 0216 680 80 86 - 0536 267 80 86

 info@matmedikal.com.tr





EXTENSION LINE 800 PSI MF

BARCODE	CODE	PRODUCT DESCRIPTION
8698931800015	MD500-015	EXTENSION LINE:15cm,MF,800psi
8698931800046	MD500-030	EXTENSION LINE: 30cm MF 800psi
8698931800060	MD500-045	EXTENSION LINE: 45cm MF 800psi
8698931800084	MD500-060	EXTENSION LINE: 60cm MF 800psi
8698931800107	MD500-090	EXTENSION LINE: 90cm MF 800psi
8698931800121	MD500-120	EXTENSION LINE: 120cm MF 800psi
8698931800145	MD500-145	EXTENSION LINE: 145cm MF 800psi
8698931800152	MD500-150	EXTENSION LINE: 150cm MF 800psi
8698931800176	MD500-180	EXTENSION LINE: 180cm MF 800psi
8698931800183	MD500-200	EXTENSION LINE: 200cm MF 800psi
8698931800213	MD500-300	EXTENSION LINE: 300cm MF 800psi



EXTENSION LINE / 800 PSI / MM

BARCODE	CODE	PRODUCT DESCRIPTION
8698931800404	MD501-010	EXTENSION LINE: 10cm MM 800psi
8698931800442	MD501-030	EXTENSION LINE: 30cm MM 800psi
8698931800466	MD501-045	EXTENSION LINE: 45cm MM 800psi
8698931800480	MD501-060	EXTENSION LINE: 60cm MM 800psi
8698931800503	MD501-090	EXTENSION LINE: 90cm MM 800psi
8698931800527	MD501-120	EXTENSION LINE: 120cm MM 800psi
8698931800541	MD501-145	EXTENSION LINE: 145cm MM 800psi
8698931800558	MD501-150	EXTENSION LINE: 150cm MM 800psi
8698931800572	MD501-180	EXTENSION LINE: 180cm MM 800psi
8698931800589	MD501-200	EXTENSION LINE: 200cm MM 800psi
8698931800602	MD501-250	EXTENSION LINE: 250cm MM 800psi
8698931800619	MD501-300	EXTENSION LINE: 300cm MM 800psi



EXTENSION LINE / LIGHT PROTECTED / 800 PSI / MF

BARCODE	CODE	PRODUCT DESCRIPTION
8698931830531	MD520-090	EXTENSION LINE: LIGHT PROTECTED 90cm MF
8698931830517	MD520-120	EXTENSION LINE: LIGHT PROTECTED 120cm MF
8698931830524	MD520-150	EXTENSION LINE: LIGHT PROTECTED 150cm MF



EXTENSION LINE / LIGHT PROTECTED / 800 PSI / MM

BARCODE	CODE	PRODUCT DESCRIPTION
8698931830616	MD521-120	EXTENSION LINE: LIGHT PROTECTED 120cm MM
8698931830623	MD521-150	EXTENSION LINE: LIGHT PROTECTED 150cm MM
8698931830630	MD521-180	EXTENSION LINE: LIGHT PROTECTED 180cm MM



EXTENSION LINE / 250 PSI / MF

BARCODE	CODE	PRODUCT DESCRIPTION
8698931801005	MD510-010	EXTENSION LINE: 10cm MF 250psi
8698931801043	MD510-030	EXTENSION LINE: 30cm MF 250psi
8698931801067	MD510-045	EXTENSION LINE: 45cm MF 250psi
8698931801081	MD510-060	EXTENSION LINE: 60cm MF 250psi
8698931801104	MD510-090	EXTENSION LINE: 90cm MF 250psi
8698931801128	MD510-120	EXTENSION LINE: 120cm MF 250psi
8698931801142	MD510-145	EXTENSION LINE: 145cm MF 250psi
8698931801159	MD510-150	EXTENSION LINE: 150cm MF 250psi
8698931801173	MD510-180	EXTENSION LINE: 180cm MF 250psi
8698931801180	MD510-200	EXTENSION LINE: 200cm MF 250psi
8698931801203	MD510-250	EXTENSION LINE: 250cm MF 250psi
8698931801210	MD510-300	EXTENSION LINE: 300cm MF 250psi



EXTENSION LINE / 250 PSI / FF

BARCODE	CODE	PRODUCT DESCRIPTION
8698931801715	MD512-015	EXTENSION LINE: 15cm FF 250psi
8698931801746	MD512-030	EXTENSION LINE: 30cm FF 500psi
8698931801807	MD512-090	EXTENSION LINE: 90cm FF 250psi
8698931801821	MD512-120	EXTENSION LINE: 120cm FF 250psi
8698931801838	MD512-140	EXTENSION LINE: 140cm FF 500psi



EXTENSION LINE / 250 PSI / MM

BARCODE	CODE	PRODUCT DESCRIPTION
8698931801418	MD511-015	EXTENSION LINE: 15cm MM 250psi
8698931801449	MD511-030	EXTENSION LINE: 30cm MM 250psi
8698931801463	MD511-045	EXTENSION LINE: 45cm MM 250psi
8698931801487	MD511-060	EXTENSION LINE: 60cm MM 250psi
8698931801500	MD511-090	EXTENSION LINE: 90cm MM 250psi
8698931801524	MD511-120	EXTENSION LINE: 120cm MM 250psi
8698931801548	MD511-145	EXTENSION LINE: 145cm MM 250psi
8698931801555	MD511-150	EXTENSION LINE: 150cm MM 250psi
8698931801579	MD511-180	EXTENSION LINE: 180cm MM 250psi
8698931801586	MD511-200	EXTENSION LINE: 200cm MM 250psi
8698931801609	MD511-250	EXTENSION LINE: 250cm MM 250psi
8698931801616	MD511-300	EXTENSION LINE: 300cm MM 250psi



EXTENSION LINE / 250 PSI / BLACK

BARCODE	CODE	PRODUCT DESCRIPTION
8698931830548	MD520-200	EXTENSION LINE: BLACK 200cm MF
8698931830555	MD520-250	EXTENSION LINE: BLACK 250cm MF



EXTENSION LINE / PERFUSION

BARCODE	CODE	PRODUCT DESCRIPTION
8698931805041	MD550-150	EXTENSION LINE: PERFUSION 150cm 800psi
8698931805348	MD550-150U	EXTENSION LINE: PERFUSION – LIGHT PROTECTED 150cm 800psi



EXTENSION LINE / SPIRAL

BARCODE	CODE	PRODUCT DESCRIPTION
8698931805997	MD560-150	EXTENSION LINE: SPIRAL 150cm



EXTENSION LINE / THREE-WAY STOPCOCK

BARCODE	CODE	PRODUCT DESCRIPTION
8698931821010	MD450-101	EXTENSION LINE w/3-WAY STOPCOCK :10cm
8698931821058	MD450-105	EXTENSION LINE w/3-WAY STOPCOCK :30cm
8698931821089	MD450-108	EXTENSION LINE w/3-WAY STOPCOCK :60cm
8698931821102	MD450-110	EXTENSION LINE w/3-WAY STOPCOCK :90cm
8698931821126	MD450-112	EXTENSION LINE w/3-WAY STOPCOCK :120cm
8698931821140	MD450-114	EXTENSION LINE w/3-WAY STOPCOCK :145cm
8698931821164	MD450-116	EXTENSION LINE w/3-WAY STOPCOCK :180cm



EXTENSION LINE / INJECTION PORT

BARCODE	CODE	PRODUCT DESCRIPTION
8698931822512	MD471-101	EXTENSION LINE w/ INJECTION PORT : 10cm
8698931822529	MD471-102	EXTENSION LINE w/ INJECTION PORT : 15cm
8698931822550	MD471-105	EXTENSION LINE w/ INJECTION PORT : 30cm
8698931822574	MD471-107	EXTENSION LINE w/ INJECTION PORT : 45cm
8698931822598	MD471-109	EXTENSION LINE w/ INJECTION PORT : 60cm
8698931822611	MD471-111	EXTENSION LINE w/ INJECTION PORT : 90cm
8698931822628	MD471-112	EXTENSION LINE w/ INJECTION PORT : 100cm
8698931822635	MD471-113	EXTENSION LINE w/ INJECTION PORT : 120cm
8698931822642	MD471-114	EXTENSION LINE w/ INJECTION PORT : 150cm



HIGH PRESSURE EXTENSION LINE / 1200 PSI / SPL - ML

BARCODE	CODE	PRODUCT DESCRIPTION
8698931803023	MD530-030	EXTENSION LINE : 30cm 1200psi SPL-ML
8698931803047	MD530-050	EXTENSION LINE : 50cm 1200psi SPL-ML
8698931803054	MD530-060	EXTENSION LINE : 60cm 1200psi SPL-ML
8698931803078	MD530-090	EXTENSION LINE : 90cm 1200psi SPL-ML
8698931803092	MD530-120	EXTENSION LINE : 120cm 1200psi SPL-ML
8698931803115	MD530-145	EXTENSION LINE : 145cm 1200psi SPL-ML
8698931803122	MD530-150	EXTENSION LINE : 150cm 1200psi SPL-ML
8698931803146	MD530-180	EXTENSION LINE : 180cm 1200psi SPL-ML
8698931803153	MD530-200	EXTENSION LINE : 200cm 1200psi SPL-ML



MICRO VOLUME EXTENSION LINE / MF

BARCODE	CODE	PRODUCT DESCRIPTION
8698931830098	MD540-060	EXTENSION LINE : MicroVolume 60cm MF
8698931830142	MD540-150	EXTENSION LINE : MicroVolume 150cm MF



EXTENSION LINE / TRANSPARENT / 500 PSI / MF

BARCODE	CODE	PRODUCT DESCRIPTION
8698931805225	MD552-030	EXTENSION LINE : 30 CM 500 psi RA-ML
8698931805126	MD552-140	EXTENSION LINE : 140 CM 500 psi RA-ML



EXTENSION LINES / VALVE

BARCODE	CODE	PRODUCT DESCRIPTION
8698931820556	MD853-400	Extention line with valve – 100 cm
8698931825032	MD853-401	Extention line with valve – 120 cm



FILTER SETS / TRANSPARENT

BARCODE	CODE	PRODUCT DESCRIPTION
8698931822000	MD470-100	IV FILTER SET: Adult 0,2 micron fluid-bacteria filter
8698931822017	MD470-101	IV FILTER SET: Adult 1,2 micron lipid-fluid-bacteria filter
8698931822024	MD470-102	IV FILTER SET: Pediatric 0,2micron fluid-bacteria filter
8698931822031	MD470-103	IV FILTER SET: Pediatric 1,2 micron lipid-fluid-bacteria filter
8698931822048	MD470-104	IV FILTER SET: Newborn 0,2micron fluid-bacteria filter
8698931822055	MD470-105	IV FILTER SET: Newborn 1,2micron lipid-fluid-bacteria filter
8698931822208	MD470-104E	IV FILTER SET: Newborn 0,2micron Endotoxine absorbent fluid-bacteria filter



FILTER SETS / LIGHT PROTECTED

BARCODE	CODE	PRODUCT DESCRIPTION
8698931822192	MD470-101U	IV FILTER SET: Adult 1,2 micron Light Protected lipid-fluid-bacteria filter
8698931822420	MD470-104U	IV FILTER SET: Newborn 0,2 micron Light Protected fluid-bacteria filter
8698931822215	MD470-105U	IV FILTER SET: Newborn 1,2 micron Light Protected lipid-fluid-bacteria filter



FILTER SETS / TRANSPARENT / INJECTION PORT

BARCODE	CODE	PRODUCT DESCRIPTION
8698931822079	MD470-107	IV FILTER SET: Adult 1,2micron lipid-fluid-bacteria filter with Injection Port
8698931822109	MD470-110	IV FILTER SET: Newborn 0,2 micron fluid-bacteria filter with Injection Port
8698931822246	MD470-110E	IV FILTER SET: Newborn 0,2 micron Endotoxine absorbent fluid-bacteria filter with Injection Port
8698931822116	MD470-111	IV FILTER SET: Newborn 1,2 micron lipid-fluid-bacteria filter with Injection Port



FILTER SETS / LIGHT PROTECTED / INJECTION PORT

BARCODE	CODE	PRODUCT DESCRIPTION
8698931822239	MD470-107U	IV FILTER SET: Adult 1,2 micron Light Protected lipid-fluid-bacteria filter with Injection Port
8698931822437	MD470-110U	IV FILTER SET: Newborn 0,2 micron Light Protected fluid-bacteria filter with Injection Port
8698931822253	MD470-111U	IV FILTER SET: Newborn 1,2 micron Light Protected lipid-fluid-bacteria filter with Injection Port



FILTER SETS / TRANSPARENT / EXTENSION LINE

BARCODE	CODE	PRODUCT DESCRIPTION
8698931822345	MD470-104EL	IV FILTER SET: Newborn 0,2 micron Endotoxine absorbent fluid-bacteria filter
8698931822307	MD470-104L	IV FILTER SET: Newborn 0,2 micron fluid-bacteria filter
8698931822314	MD470-105L	IV FILTER SET: Newborn 1,2 micron lipid-fluid-bacteria filter



FILTER SETS / LIGHT PROTECTED / EXTENSION LINE

BARCODE	CODE	PRODUCT DESCRIPTION
8698931822390	MD470-104UL	IV FILTER SET: Newborn 0,2 micron Light Protected fluid-bacteria filter
8698931822352	MD470-105UL	IV FILTER SET: Newborn 1,2 micron Light Protected lipid-fluid-bacteria filter



FILTER SETS / TRANSPARENT / EXTENSION LINE / INJECTION PORT

BARCODE	CODE	PRODUCT DESCRIPTION
8698931822369	MD470-110L	IV FILTER SET: Newborn 0,2micron fluid-bacteria filter With Injection Port



FILTER SETS / LIGHT PROTECTED / EXTENSION LINE / INJECTION PORT

BARCODE	CODE	PRODUCT DESCRIPTION
8698931822383	MD470-111UL	IV FILTER SET: Newborn 1,2 micron Light Protected lipid-fluid-bacteria filter With Injection Port



FILTER SETS / TRANSPARENT / NEEDLE-FREE INJECTION VALVE

BARCODE	CODE	PRODUCT DESCRIPTION
8698931822123	MD470-112	IV FILTER SET: Adult 0,2 micron fluid-bacteria filter with needle-free injection valve
8698931822130	MD470-113	IV FILTER SET: Adult 1,2 micron lipid-fluid-bacteria filter with needle-free injection valve
8698931822161	MD470-116	IV FILTER SET: Newborn 0,2 micron fluid-bacteria filter with needle-free injection valve
8698931822284	MD470-116E	IV FILTER SET: Newborn 0,2 micron Endotoxine absorbent fluid-bacteria filter with needle-free injection valve



FILTER SETS / LIGHT PROTECTED / NEEDLE-FREE INJECTION VALVE

BARCODE	CODE	PRODUCT DESCRIPTION
8698931822277	MD470-113U	IV FILTER SET: Adult 1,2 micron Light Protected lipid-fluid-bacteria filter with needle-free injection valve
8698931822444	MD470-116U	IV FILTER SET: Newborn 0,2 micron Light Protected fluid-bacteria filter with needle-free injection valve
8698931822291	MD470-117U	IV FILTER SET: Newborn 1,2 micron Light Protected lipid-fluid-bacteria filter with needle-free injection valve



FILTER SETS / LIGHT PROTECTED / EXTENSION LINE / NEEDLE-FREE INJECTION VALVE

BARCODE	CODE	PRODUCT DESCRIPTION
8698931822413	MD470-116UL	IV FILTER SET: Newborn 0,2 micron Light Protected fluid-bacteria filter with needle-free injection valve



FILTER SETS / TRANSPARENT / 2 PORTS

BARCODE	CODE	PRODUCT DESCRIPTION
8698931802057	MD470-200	COMBINE FILTER SET- Newborn 0,2 micron IV Bacteria filter, 2 Ports
8698931802101	MD470-200E	COMBINE FILTER SET -200: Newborn 0.2micron endotoxine absorbent IV bacteria filter, 2 Ports
8698931802088	MD470-210	COMBINE FILTER SET: Newborn 1,2 micron IV Bacteria filter, 2 Ports
8698931802255	MD470-213	COMBINE FILTER SET -213: Adult 1,2 micron IV Bacteria Filter, 2 Ports
8698931802224	MD470-203	COMBINE FILTER SET -203: Adult 0,2 micron IV Bacteria Filter 2 Ports



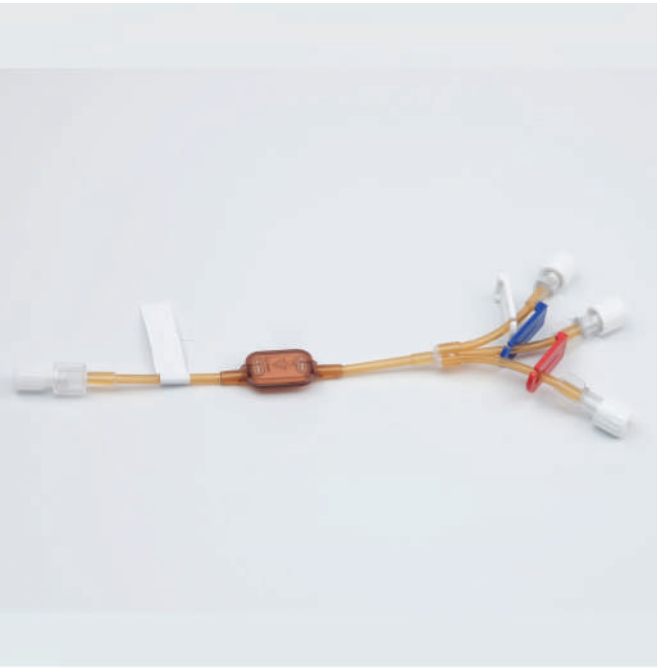
FILTER SETS / LIGHT PROTECTED / 2 PORTS

BARCODE	CODE	PRODUCT DESCRIPTION
8698931802095	MD470-200U	COMBINE FILTER SET: Newborn 0.2micron Light Protected IV Bacteria Filter, 2 Ports
8698931802064	MD470-210U	COMBINE FILTER SET: Newborn 1.2 micron Light Protected IV Bacteria Filter, 2 Ports



FILTER SETS / TRANSPARENT / 3 PORTS

BARCODE	CODE	PRODUCT DESCRIPTION
8698931804006	MD470-300	COMBINE FILTER SET-300: Newborn 0,2 micron IV bacteria filter, 3 ports
8698931802125	MD470-300E	COMBINE FILTER SET-300E: Newborn 0.2micron endotoxine absorbent, 3 ports
8698931804068	MD470-303	COMBINE FILTER SET-303: Adult 0,2 micron IV Bacteria Filter, 3 ports
8698931804037	MD470-310	COMBINE FILTER SET-310: Newborn 1,2 micron IV Bacteria Filter, 3 ports
8698931804099	MD470-313	COMBINE FILTER SET-313: Adult 1,2 micron IV Bacteria Filter, 3 ports



FILTER SETS / LIGHT PROTECTED / 3 PORTS

BARCODE	CODE	PRODUCT DESCRIPTION
8698931802118	MD470-300U	COMBINE FILTER SET-300: Newborn 0.2micron light protected IV fluid-bacteria filter, 3 ports
8698931804075	MD470-310U	COMBINE FILTER SET-310U: Newborn 1,2 micron light protected IV Bacteria Filter, 3 ports



INFUSION PUMP SETS / TRANSPARENT

BARCODE	CODE	PRODUCT DESCRIPTION
8698931820006	MD400-100	IV INFUSION PUMP SET: EL



INFUSION PUMP SETS / TRANSPARENT / INJECTION PORT

BARCODE	CODE	PRODUCT DESCRIPTION
8698931820013	MD400-101	IV INFUSION PUMP SET: Injection Port, Male Luer



INFUSION PUMP SETS / TRANSPARENT / "Y" INJECTION PORT

BARCODE	CODE	PRODUCT DESCRIPTION
8698931820020	MD400-102	IV INFUSION PUMP SET: "Y" Injection port, Male Luer



INFUSION PUMP SETS / TRANSPARENT / IV BACTERIA FILTER / "Y" INJECTION PORT

BARCODE	CODE	PRODUCT DESCRIPTION
8698931820273	MD402-101	IV INFUSION PUMP SET: Adult 0,2 micron IV Bacteria filter
8698931820280	MD402-102	IV INFUSION PUMP SET: Adult 1,2 micron IV Bacteria filter
8698931820297	MD402-103	IV INFUSION PUMP SET: Newborn 0,2 micron IV Bacteria filter
8698931820303	MD402-104	IV INFUSION PUMP SET: Newborn 1,2 micron IV Bacteria filter



INFUSION PUMP SETS / TRANSPARENT / IV BACTERIA FILTER / INJECTION PORT

BARCODE	CODE	PRODUCT DESCRIPTION
8698931820310	MD402-105	IV INFUSION PUMP SET: Adult 0,2 micron IV Bacteria Filter, "Y" Injection Port
8698931820327	MD402-106	IV INFUSION PUMP SET: Adult 1,2 micron IV Bacteria Filter, "Y" Injection Port
8698931820334	MD402-107	IV INFUSION PUMP SET: Newborn 0,2 micron IV Bacteria Filter, "Y" Injection Port
8698931820341	MD402-108	IV INFUSION PUMP SET: Newborn 1,2 micron IV Bacteria Filter, "Y" Injection Port



INFUSION PUMP SETS / TRANSPARENT / IV BACTERIA FILTER / NEEDLE-FREE INJECTION VALVE

BARCODE	CODE	PRODUCT DESCRIPTION
8698931820358	MD402-109	Infusion Pump Set: Adult 0,2 micron IV bacteria filter w/NFIV
8698931820365	MD402-110	Infusion Pump Set: Adult 1,2 micron IV bacteria filter w/NFIV
8698931820372	MD402-111	Infusion Pump Set: Newborn 0,2 micron IV bacteria filter w/NFIV
8698931820389	MD402-112	Infusion Pump Set: Newborn 1,2 micron IV bacteria filter w/NFIV



INFUSION PUMP SETS / LIGHT PROTECTED / "Y" INJECTION PORT

BARCODE	CODE	PRODUCT DESCRIPTION
8698931824103	MD421-100	IV INFUSION PUMP SET: Light Protected, Male Luer



INFUSION PUMP SETS / BLACK / INJECTION PORT

BARCODE	CODE	PRODUCT DESCRIPTION
8698931824110	MD421-101	IV INFUSION PUMP SET: Injection Port , Male Luer, Black



VESSEL CANNULA

BARCODE	CODE	PRODUCT DESCRIPTION
8698931815156	MD700-001	Vessel Cannula - without Valve
8698931815163	MD700-002	Vessel Cannula - with Valve



MONITORING DEVICE CONSUMABLES / DUAL CHECK VALVE

BARCODE	CODE	PRODUCT DESCRIPTION
8698931810021	MD850-010	TRANSFER SET with DUAL CHECK VALVES



MONITORING DEVICE CONSUMABLES / SPIRAL

BARCODE	CODE	PRODUCT DESCRIPTION
8698931810038	MD850-020	Connection Set with T-Connector & 2 valves: 150cm
8698931810045	MD850-021	Connection Set with T-Connector & 2 valves: 250cm



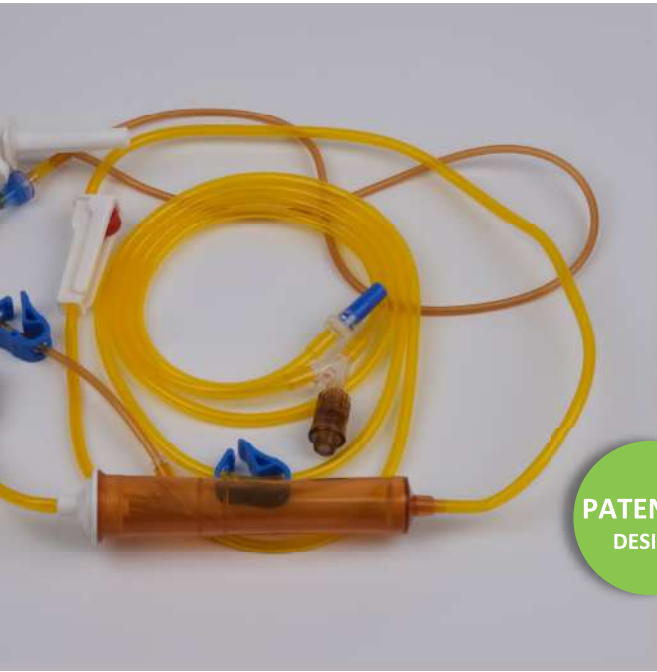
MONITORING DEVICE CONSUMABLES / CHECK VALVE / EXTENTION LINE

BARCODE	CODE	PRODUCT DESCRIPTION
8698931810014	MD850-025V	Interconnection set with valve: 25cm
8698931810007	MD850-035V	Interconnection set with valve: 35cm



MONITORING DEVICE CONSUMABLES / EXTENTION LINE

BARCODE	CODE	PRODUCT DESCRIPTION
8698931809001	MD850-035	TRIPACK Extention Line: 35cm



CHEMOTHERAPY SETS / AIR ABSORBENT

BARCODE	CODE	PRODUCT DESCRIPTION
8698931801357	MD860-400	CHEMOTHERAPY SET (AIR ABSORBENT w 4 ways)
8698931841452	MD860-401	CHEMOTHERAPY SET (AIR ABSORBENT w 1 way)
8698931841445	MD860-402	CHEMOTHERAPY SET (AIR ABSORBENT w 2 ways) <small>It is produced on behalf of METYEN ARGE.</small>



CHEMOTHERAPY SETS

BARCODE	CODE	PRODUCT DESCRIPTION
8698931801364	MD860-410	CHEMOTHERAPY APPLICATION SET (QUARTET)
8698931841247	MD860-411	CHEMOTHERAPY APPLICATION SET (SINGLE)
8698931841148	MD860-412	CHEMOTHERAPY APPLICATION SET (DUAL)



CHEMOTHERAPY APPLICATION / THREE-WAY STOPCOCK

BARCODE	CODE	PRODUCT DESCRIPTION
8698931841049	MD860-414	CHEMOTHERAPY APPLICATION PUMP SET with 3-way stopcock



CHEMOTHERAPY APPLICATION / VALVE

BARCODE	CODE	PRODUCT DESCRIPTION
8698931820549	MD853-300	Transfer set with valve (with Additional medication transfer port unit)

**CHEMOTHERAPY APPLICATION / LIGHT PROTECTION**

BARCODE	CODE	PRODUCT DESCRIPTION
8698931810229	MD854-102	Light protected interconnection set w/ IV Bacteria filter
8698931810236	MD854-103	Light protected interconnection set w/ IV Bacteria filter & Valve



IRRIGATION SETS

BARCODE	CODE	PRODUCT DESCRIPTION
8698931802408	MD870-411	IRRIGATION SET – S10
8698931802415	MD870-412	IRRIGATION SET – S11.5
8698931802422	MD870-413	IRRIGATION SET – S5
8698931802439	MD870-414	IRRIGATION SET – S11
8698931802446	MD870-415	IRRIGATION SET – S13
8698931802453	MD870-416	IRRIGATION SET – S15



DOUBLE VALVE / INTERCONNECTION SETS

BARCODE	CODE	PRODUCT DESCRIPTION
8698931810052	MD850-220V	Interconnection set with dual valves: 150cm
8698931810069	MD850-240V	Interconnection set with dual valves: 250cm



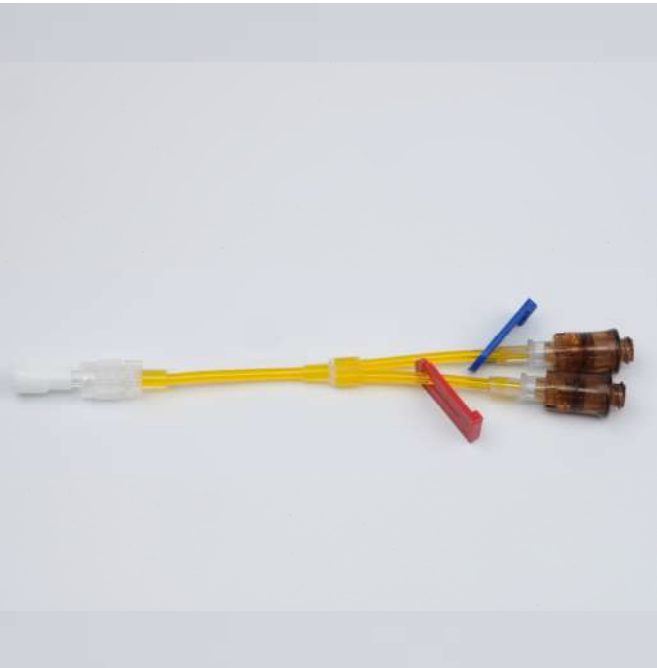
TRANSFER SETS / 2 PORTS

BARCODE	CODE	PRODUCT DESCRIPTION
8698931820587	MD853-320	Transfer Set with valve & 2 ports



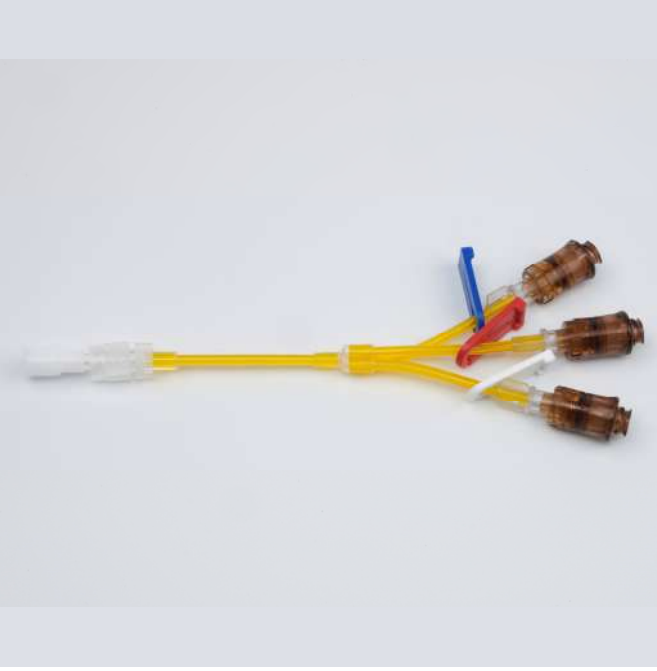
SETS WITH NEEDLE-FREE VALVE / 1 PORT

BARCODE	CODE	PRODUCT DESCRIPTION
8698931810205	MD854-100	Connection Set with valve (1 port)
8698931810212	MD854-101	Light Protected connection Set with valve (1 port)



SETS WITH NEEDLE-FREE VALVE / 2 PORTS

BARCODE	CODE	PRODUCT DESCRIPTION
8698931810243	MD854-104	Connection Set with valve (2 ports)
8698931810250	MD854-105	Light Protected connection Set with valve (2 ports)



SETS WITH NEEDLE-FREE VALVE / 3 PORTS

BARCODE	CODE	PRODUCT DESCRIPTION
8698931810281	MD854-108	Connection Set with valve (3 ports)
8698931810298	MD854-109	Light Protected connection Set with valve (3 ports)



CONNECTORS

BARCODE	CODE	PRODUCT DESCRIPTION
8698931810113	MD870-700	Connector



MIXING SETS

BARCODE	CODE	PRODUCT DESCRIPTION
8698931801869	MD490-320	MIXTURE SET-20 (Transparent / 2-Channels)
8698931801876	MD490-320U	MIXTURE SET-20 (Amber / 2-Channels)
8698931801890	MD490-330	MIXTURE SET-30 (Transparent / 3-Channels)
8698931802002	MD490-330U	MIXTURE SET-30 (Amber / 3-Channels)



TRANSFER SETS

BARCODE	CODE	PRODUCT DESCRIPTION
8698931800848	MD490-600	TRANSFER SET



TPN APPLICATION

BARCODE	CODE	PRODUCT DESCRIPTION
8698931810311	MD854-111	Light protected connection set with valve & IV bacteria filter (3 ports)



TPN SETS / EVA BAG / VALVES / INJECTOR / EXTENSION LINE / FILTER

BARCODE	CODE	PRODUCT DESCRIPTION
8698931835673	MD440-046U	TPN Set-88 (250 mL)
8698931835680	MD440-047U	TPN Set-89 (500 mL)
8698931815125	MD440-048U	TPN Set-90 (1000 mL)



TPN APPLICATION


BARCODE	CODE	PRODUCT DESCRIPTION
8698931810335	MD854-113	Light protected connection set with needle-free injection valve



MAT MEDİKAL

www.matmedikal.com.tr

 İnönü Mah. Kartal Cad. ABS Plaza Ataşehir/İstanbul

 0216 680 80 86 - 0536 267 80 86

 info@matmedikal.com.tr

